



Helping hematologists conquer blood diseases worldwide



*ASH Annual Meeting Abstracts with 336 positive votes out of 339*

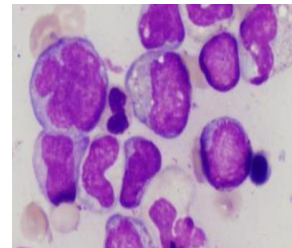
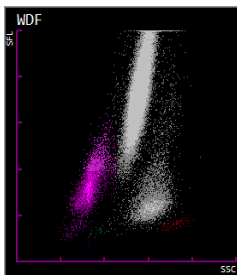
*The "ASH 2022 LOUISIANA Best Foreign Scientific Contribution" Award Goes To The Titled Poster :*

***L'USO DIAGNOSTICO DEL SEMPLICE ESAME EMOCROMOCITOMETRICO, CON L'IMPIEGO DI TECNOLOGIE IN FLUORESCENZA , IN UN CASO DI LEUCEMIA ACUTA MIELOIDE IN PAZIENTE CON OSTEOSARCOMA.***

***Modafferi B.<sup>2</sup>, Latella V.<sup>1</sup> Oliva B. M.<sup>1</sup>, Garreffa C.<sup>1</sup>***

***<sup>1</sup> U.O.C. Laboratorio Analisi G.O.M. "Bianchi-Melacrino-Morelli" Reggio Calabria***

***<sup>2</sup> Direttore U.O.C. Laboratorio Analisi G.O.M. "Bianchi-Melacrino-Morelli" Reggio Calabria***



*Excerpt from the text: The microscopic observation performed on a peripheral blood smear confirmed the diagnostic suspicion posed by the cellular distribution scattergrams. There are myeloid blasts equal to 60% of the total cellularity, marked anisopoikilocytosis, hypochromic red blood cells. Cytofluorimetric analysis performed on bone marrow shows the presence of a myeloid blast population equal to 70% of global cellularity.*